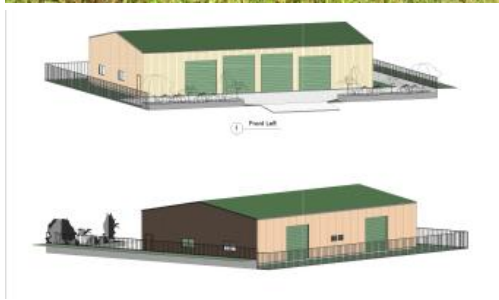


Sold



Approximate boundaries shown

14 Theresa Dr, Mossman



## New Shed Build

Secure yours off the plan. Each shed is 208m<sup>2</sup> in size and the measurements are 16m deep by 13m wide.

This is 16-18 week turnkey package deal from the signing of your contract.

An option also exists to purchase both the sheds and lease the other side out for income.

Each of the sheds will ideally have its own bathroom and kitchenette and there will be plenty of parking out the front.

The sheds will have loads of airflow and therefore be naturally cool. With no rear neighbours having the rear roller door (3.6m high x 3.6m wide) up and the side windows open will harness the breezes nicely.

Access is well thought out with two large roller doors to the front. One being 4.0m high to allow for the larger vehicles and the perhaps the boat and the other being 3.6m high.

Located on Theresa Drive which is the commercial hub of Mossman you will be surrounded by long term and successful family businesses. There is no better position and location for your shed.

Contact Callum on 0437 981 195 for full details.

<b>Price</b>	SOLD
<b>Property Type</b>	Commercial
<b>Property ID</b>	669

### Agent Details

Callum Jones - 0437 981 195

### Office Details

Port Douglas  
1/32 Macrossan St Port Douglas  
QLD 4877 Australia  
07 4099 5550



*The above information provided has been furnished to us by the vendor/s. We have not verified whether or not that information is accurate and do not have any belief in one way or the other in its accuracy. We do not accept any responsibility to any person for its accuracy and do no more than pass it on. All interested parties should make and rely upon their own inquiries in order to determine whether or not this information is in fact accurate.*